

SERVICE  
LIGHT LIFTING  
INDUSTRIAL CRANES  
PROCESS CRANES  
PORT CRANES  
LIFT TRUCKS



Part  
of **KONECRANES®**

## MACHINETOOL SOLUTIONS UNLIMITED

Testimonial

# Link-Belt Construction Equipment Company, Inc. Lexington, KY



## Testimonial

**LINK-BELT CONSTRUCTION EQUIPMENT COMPANY, INC**  
**LEXINGTON, KY**



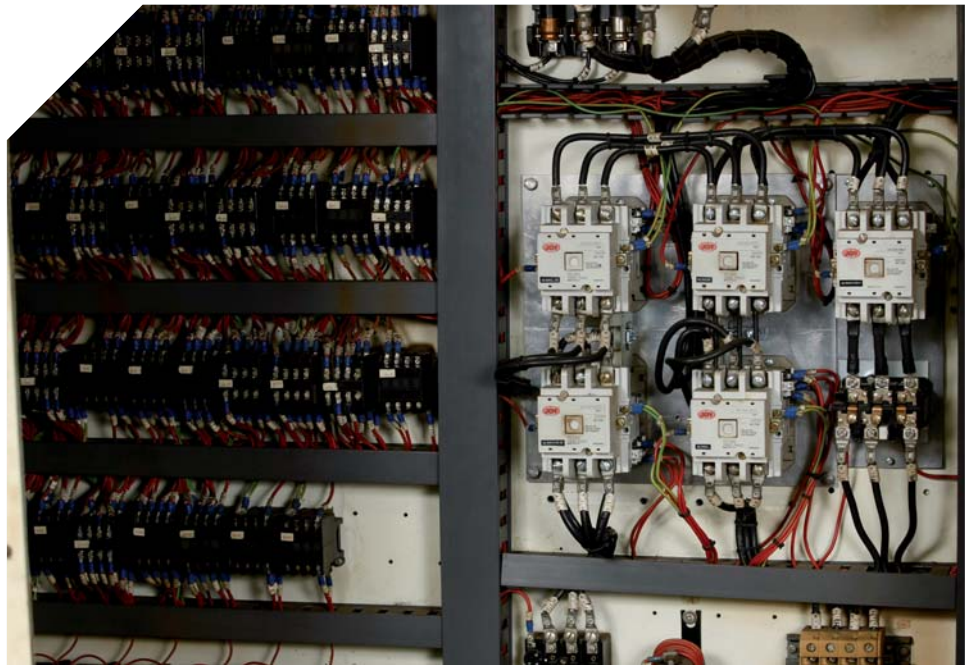
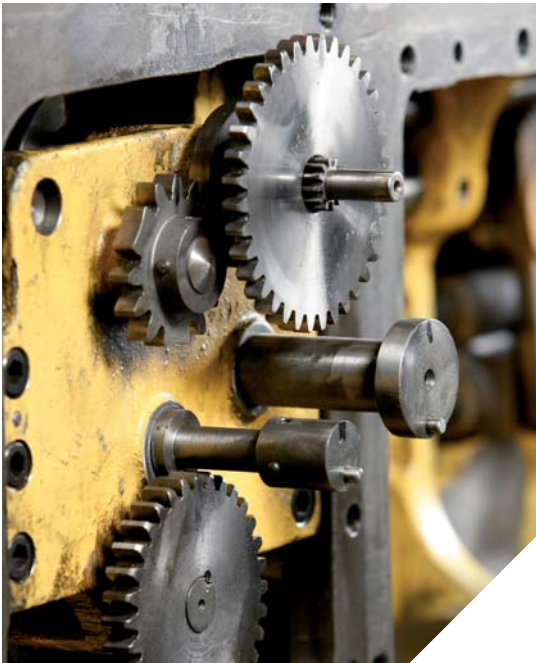
Part of **KONECRANES®**

### The Challenge

The Link-Belt Construction Equipment Company is a leader in the design, manufacture and sales of telescopic and lattice boom cranes, with headquarters in Lexington, Kentucky.

Link-Belt's core production base and center for worldwide operations is its 500,000 sq. ft. manufacturing facility in Lexington.

To support their expansion plans over the last 10 years, Link-Belt brought in Machine Tool Solutions Unlimited to provide technical assistance and expertise to solve their machine challenges.



Lewis 60, the full contouring table rebuild of a Cincinnati T-40 HBM and the complete restructure of the long "X" axis on a smaller Cincinnati-Gilbert boring mill as well.

"Your help with our Cincinnati-Milacron, the recent help with the Mitsubishi double gantry boring mill head, the Giddings & Lewis 60 and the Wotan Cutmax 2 have proven to Link-Belt Senior Management that your staff can work on diversified machining equipment without concern," Bowman commented.

### The Solution

In the past years, Machine Tool Solutions Unlimited has provided many solutions to Link-Belt's machine challenges. Their large Cincinnati-Gilbert Floor Mills were mechanically overhauled and retrofitted with a Fanuc control system.

One of the three Giddings & Lewis 50" x 50" hydrostatic tables that Machine Tool Solutions Unlimited overhauled sits at this machine for rotational flexibility.

"The personal delivery of the Mitsubishi special head spindle was appreciated. You felt this urgency as if you were in my shoes here," said Bowman to Harold Schoch, MTSU.

Machine Tool Solutions Unlimited performed a complete geometry overhaul of a Giddings &

### The Result

"Machine Tool Solutions Unlimited continued commitment to quality, attention to meeting the customer's deadlines and coming in on budget continues to make your company the first in mind when support is needed on our machine tools," continued Bowan.

**"THIS CINCINNATI-GILBERT MACHINE HAS WORKED WELL FOR US AND WAS AN EXAMPLE OF YOUR TEAM'S EXPERTISE."**